

VMWare Installation Instructions

A detailed explanation of the installation procedure of the LANGuardian VSX image to install a LANGuardian virtual machine.



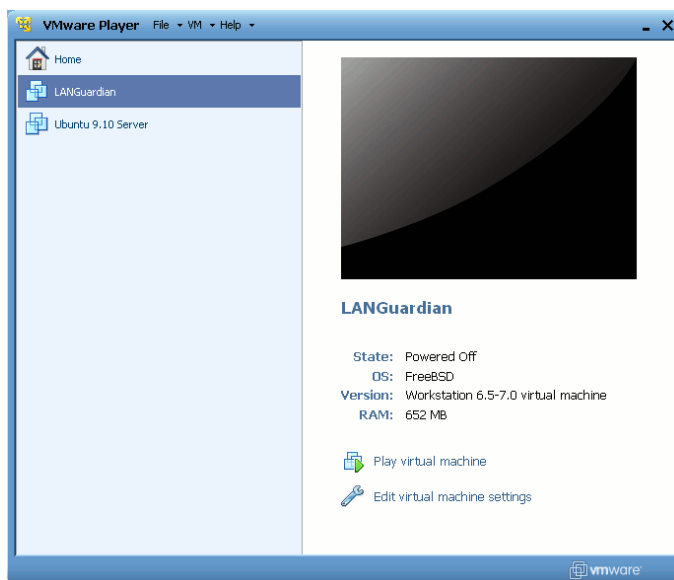
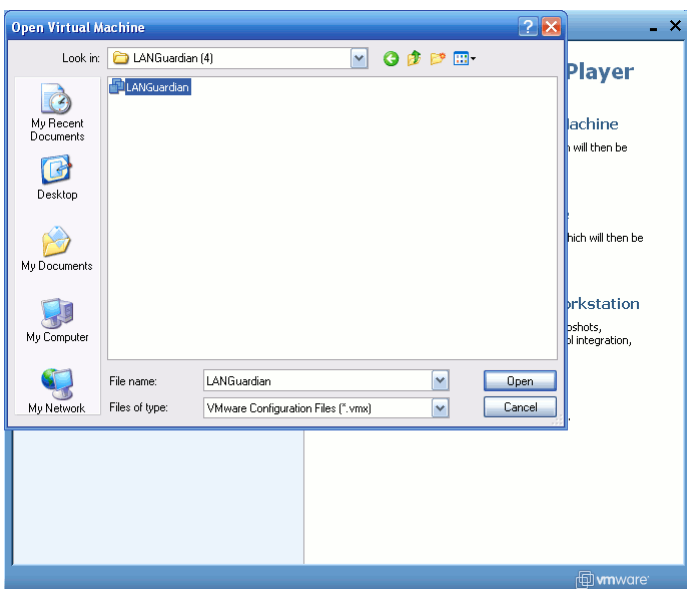
Installation instructions for VMWare player

From the VMWare Player menu;

- select the option **Open a Virtual Machine**,
- browse the extracted LANGuardian directory and select the LANGuardian .vsx file,

The LANGuardian virtual machine is initially powered down.

- Select the **Play virtual machine** option (the LANGuardian virtual machine powers on and executes a boot sequence),
- On completion of the boot sequence, a logon screen with a selection of low level configuration options is displayed on the console.



Configuration for VMWare player

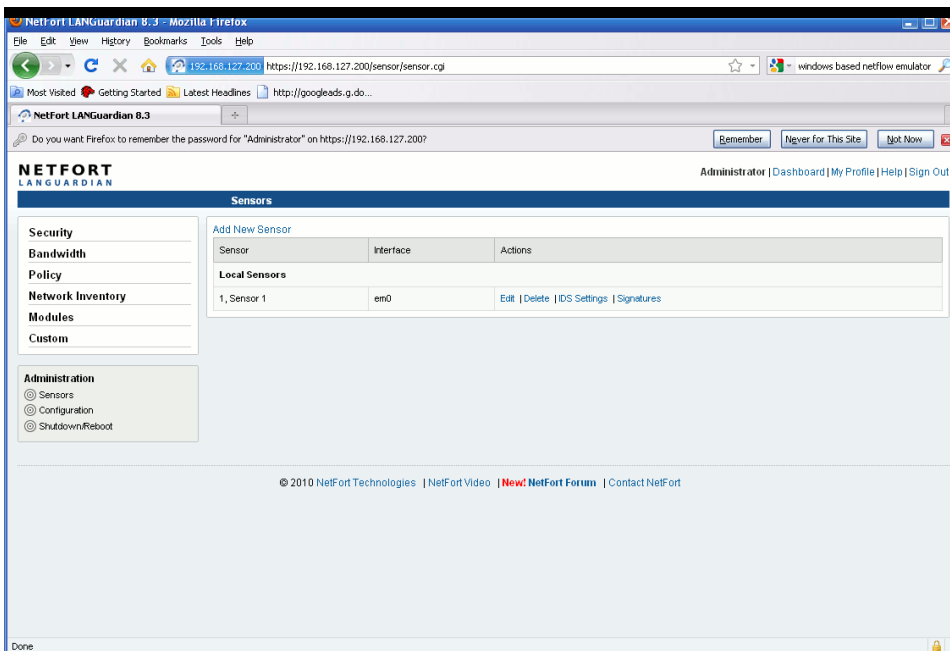
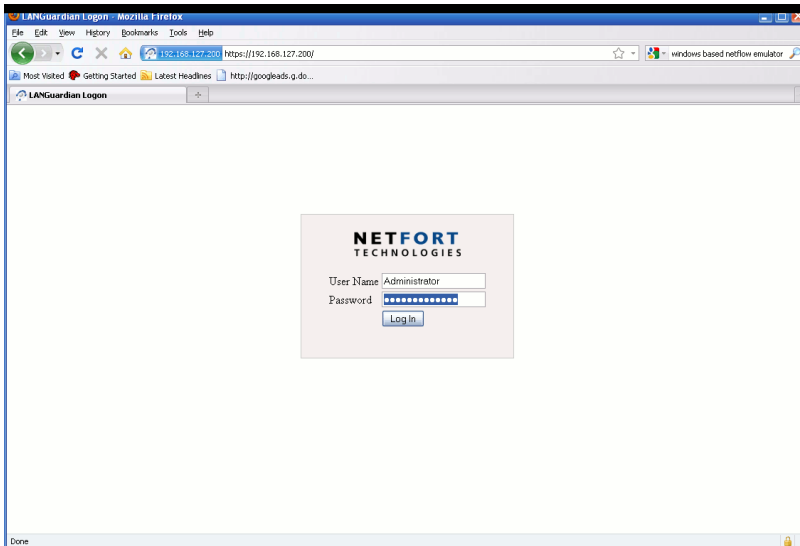
```

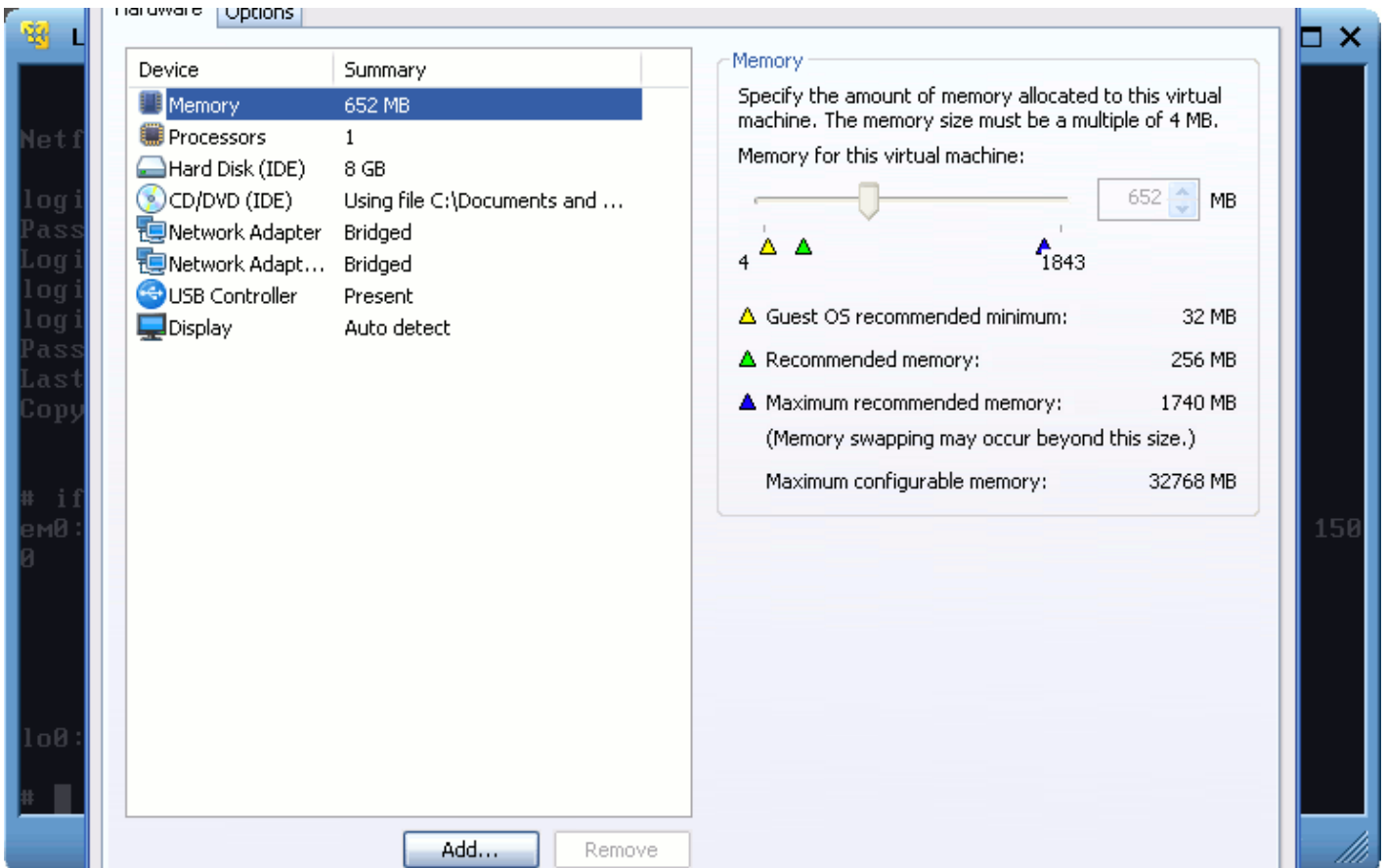
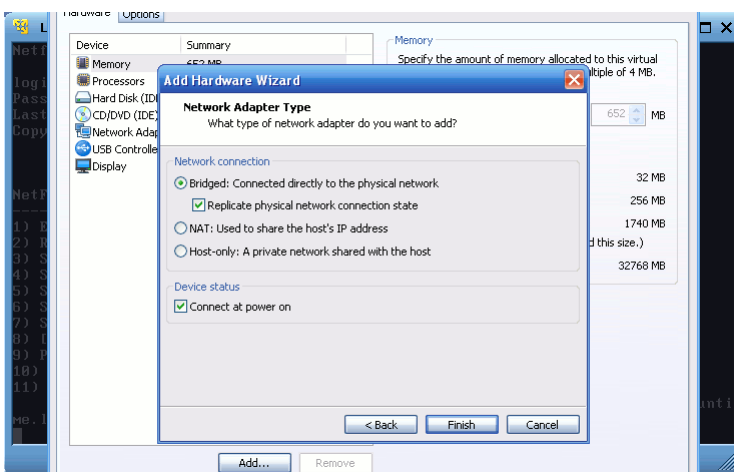
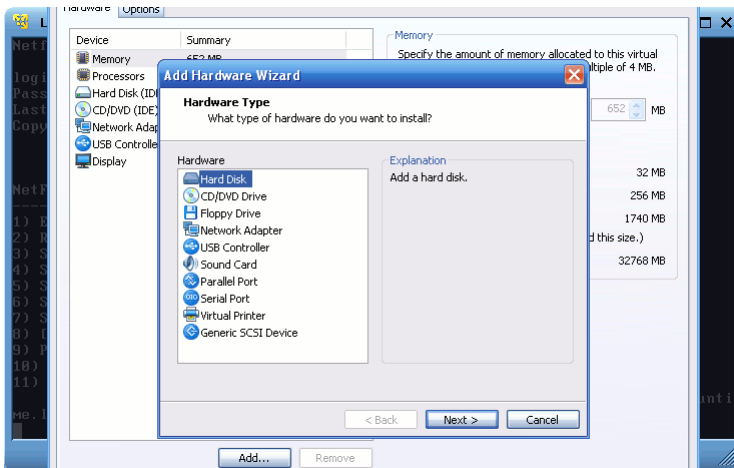
LANGuardian - VMware Player  File  VM  Help
table user_membership is ok (0 records)
table torrent_names is ok (12191 records)
table resolv is ok (48 records)
table identity_groups is ok (0 records)
table sysload is ok (0 records)
table macinfo is ok (36 records)
table windows_update is ok (0 records)
table log_report_runtime is ok (0 records)
table system_login is ok (0 records)
Table user_info is OK, no action needed

NetFort LANGuardian CLI
-----
1) Exit this program
2) Reboot NetFort LANGuardian
3) Shutdown NetFort LANGuardian
4) Set Management Interface (current: em0)
5) Set IP address/mask (current: 192.168.127.200/255.255.255.0)
6) Set Default Router (current: 192.168.127.1)
7) Set role (Manager or slave) (current: manager)
8) I slave\ Set Central Manager IP address (current: )
9) PING machine
10) reset GUI password to 'Administrator'
11) Download Central Manager Key
Please enter your choice:
    
```

Having logged on to the console after installation, you are presented with an installation menu which will allow you to confirm an IP address that may be used to access the LANGuardian management interface.

- Select option 5, **Set IP address/mask**, to set the IP address and required subnet mask.
- The LANGuardian virtual machine has a default IP address of **192.168.127.200**. Using option 5 to set the IP address and required subnet mask sets this to an accessible IP address.
- Select option 6, **Set Default Router**, to set the default router/default gateway that the LANGuardian will use to access the internet to download the latest IDS rulesets and reports.
- Access the LANGuardian's web interface at https://your_ip_address using the username and password given below.
 - **username: Administrator**
 - **password: Administrator**





Advanced configuration for VMWare player

The LANGuardian has been preconfigured to have a local sensor which will monitor traffic on your desktop or laptop. If your VMWare host has a second network adapter, it can also be used by the LANGuardian virtual machine as a local sensor. At the LANGuardian virtual machine console under the VM tab select the settings option. To add the network adapter;

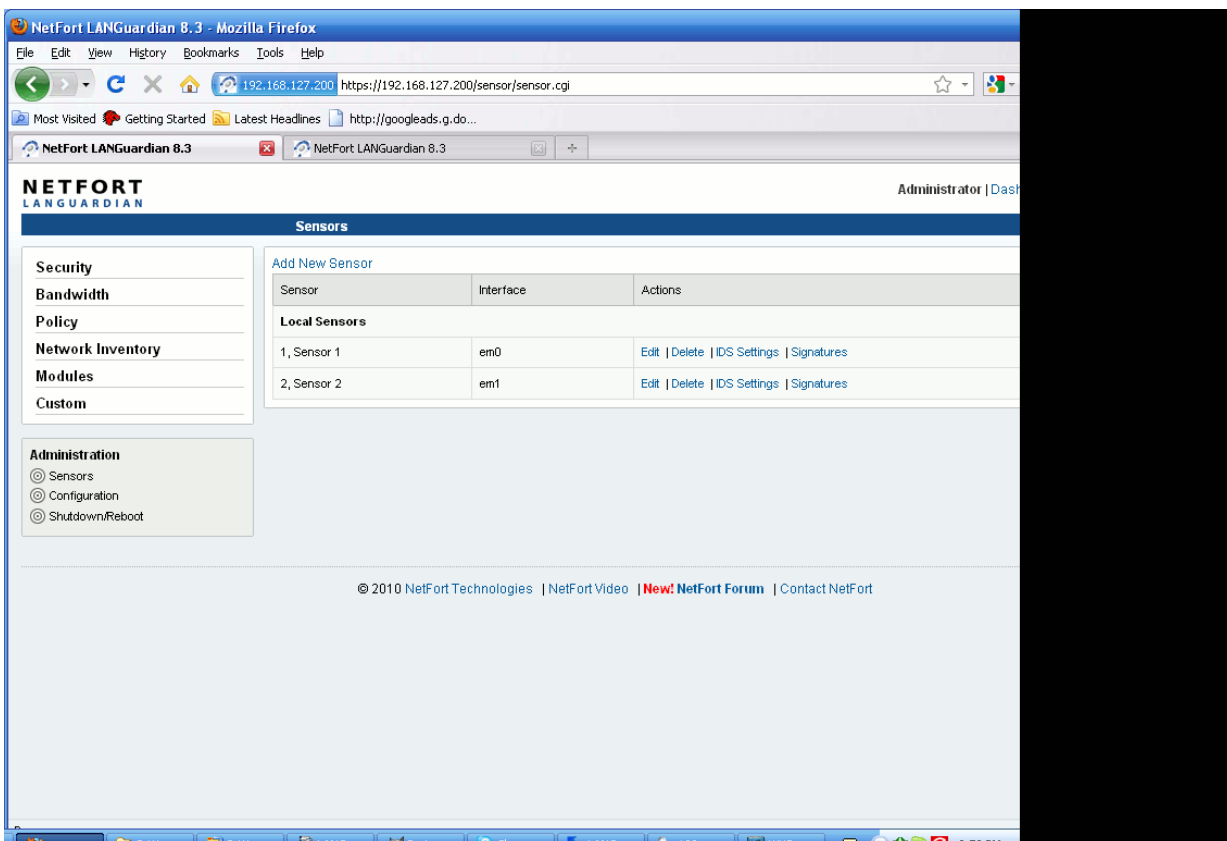
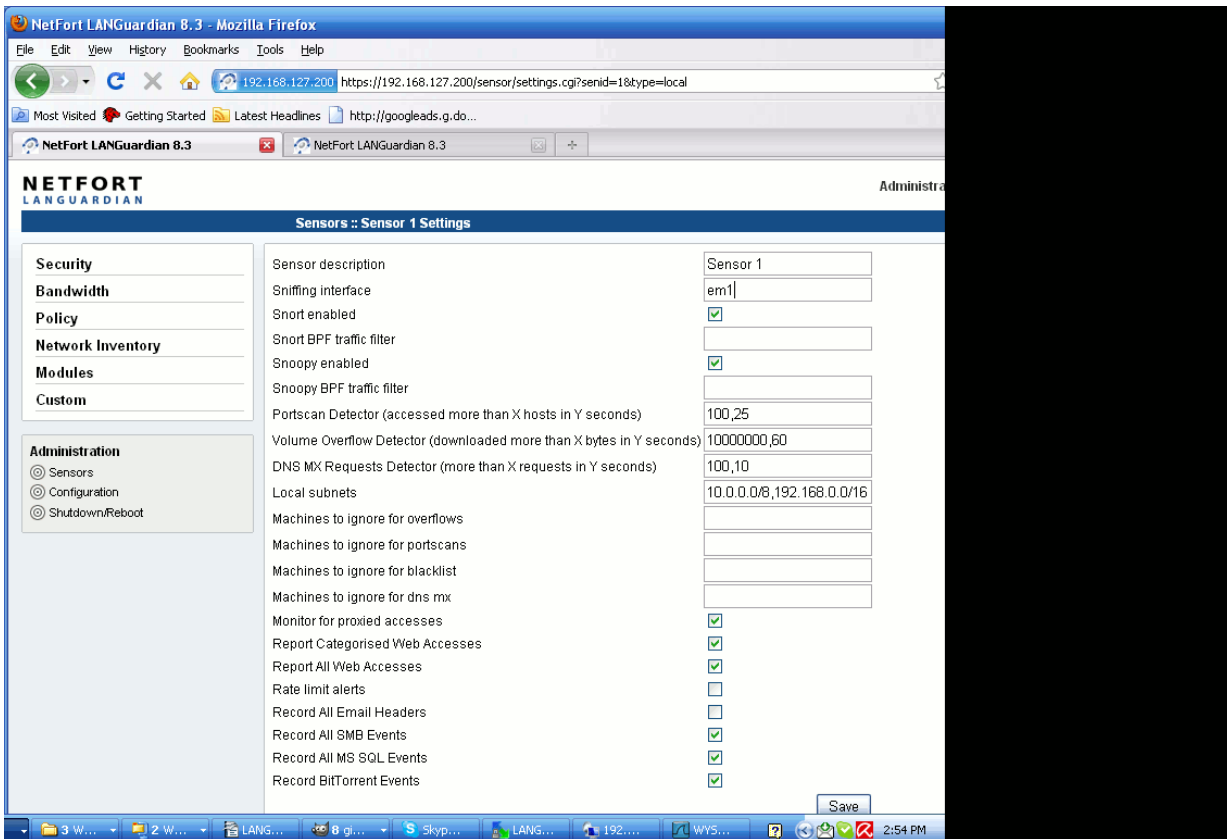
- Select **Add**,
- Select the network adapter from the list of hardware,
- Set the network connection to **Bridged** (this allows the LANGuardian virtual machine to be directly mapped to the physical interface).
- Click on **Finish** to complete.

There are now two bridged interfaces to the LANGuardian Virtual machine. On the LANGuardian, you will need to edit the existing local sensor to use the second network adapter or add a second local sensor. To edit the existing sensor;

- Go to Administration → Sensors → Local Sensors page
- For sensor 1, select **Edit**,
- Set the Sniffing Interface to em1 and click on save.

To add a new sensor;

- Go to Administration → Sensors → Add Sensor
- Set the Sniffing Interface to em1 and click on save.



Contact Technical Support

Email: support@netforttechnologies.com
 Tel Ireland: +353 (0) 91 520 501
 Tel UK: +44 (0) 207 060 2850
 Tel US: +1 646 924 0732